



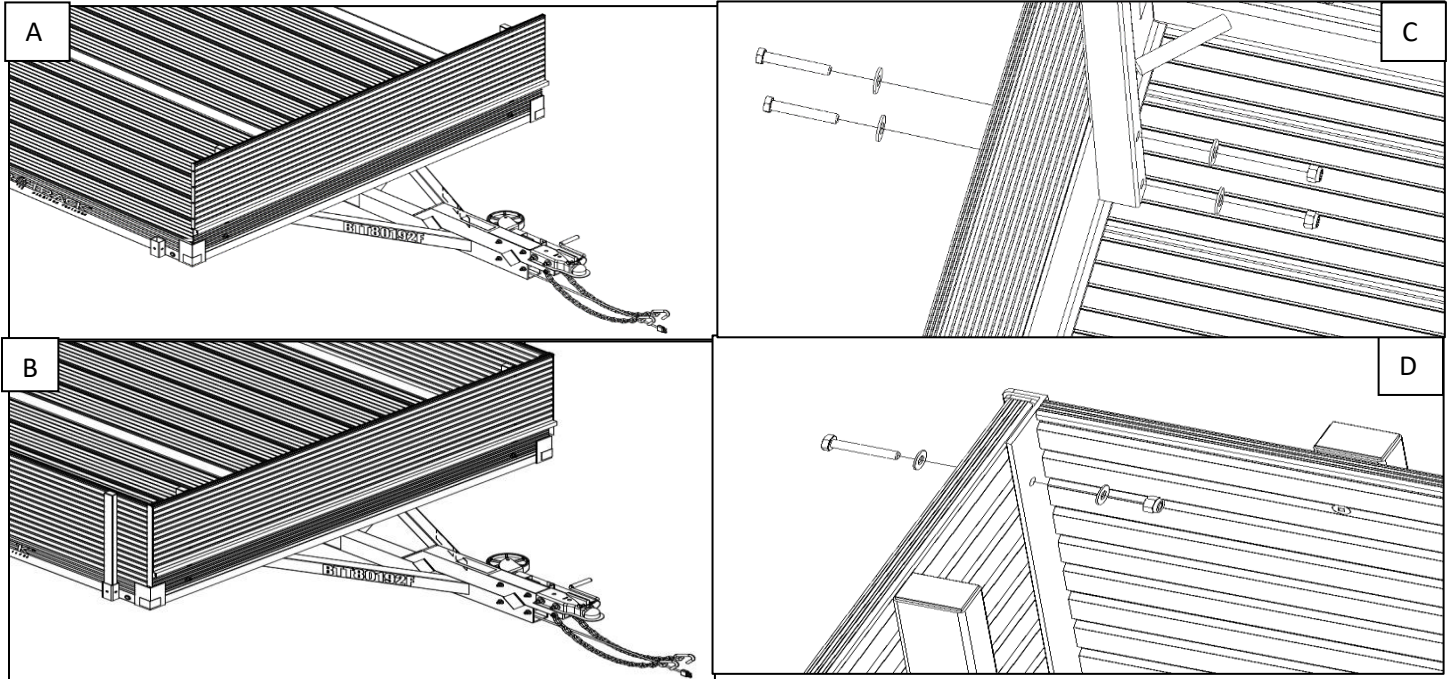
Accessory Installation Instructions

Standard Utility Trailers

Installation Instructions

Single Axle Utility Trailer

Rock Guard



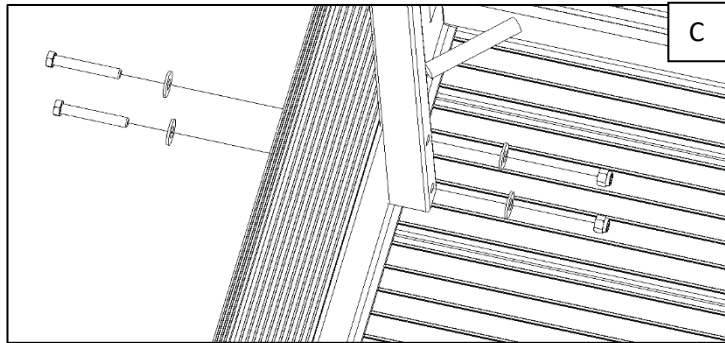
**** For rock guard assembly, two or more people are recommended**

Rock Guard (no Side Kit)

1. Place the rock guard onto the trailer as shown in image A. Center the rock guard on the front rail of the trailer. The rock guard's stakes should be flush with the inner face of the front rail (Figure C) and raised off the bed of the trailer by $\frac{1}{4}$ ".
2. Hold or clamp the rock guard in place and, using the pre-drilled holes in the stakes as a template, drill $\frac{3}{8}$ " pilot holes through the front rail of the trailer.
3. Using the bolt configuration shown in Figure C, install bolts in the pre-drilled holes and tighten. Do not crush the extrusions while tightening the hardware.

Rock Guard with a Side Kit (Figure B)

1. Place the rock guard onto the trailer being careful to ensure the rock guard fits into the outer angles on the side kit (see Figure D). The rock guard's stakes should be raised $\frac{1}{4}$ " off the bed of the trailer.
2. Hold or clamp the rock guard in place. Using the holes on the side kit's angle as a template, drill $\frac{1}{4}$ " clearance holes through the *rock guard*. With the $\frac{1}{4}$ " x $1 \frac{1}{2}$ " bolt configuration shown in Figure D, place bolts in the drilled holes but do not tighten.

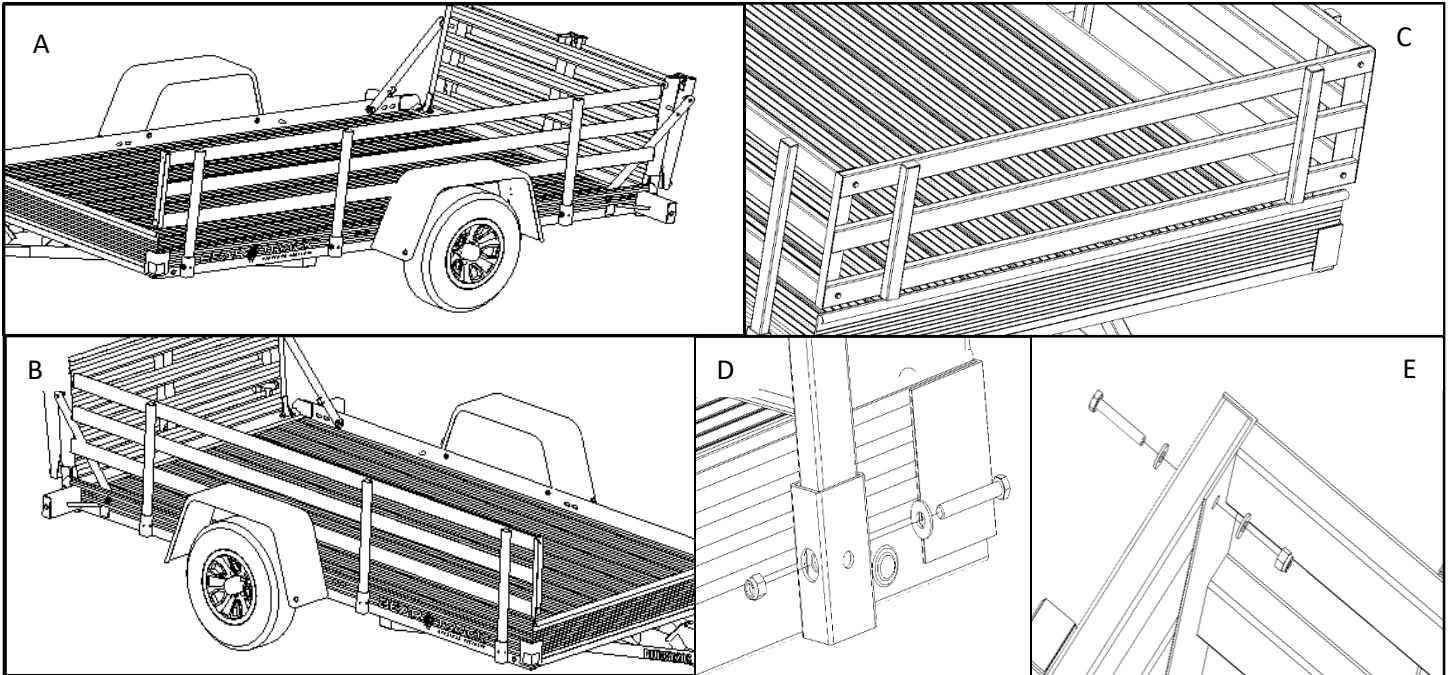


3. With the rock guard still clamped and using the holes in the stakes as a template, drill 3/8" clearance holes in the trailer's *front rail*. Using the 3/8" x 2 1/2" bolt configuration in image C, install bolts in the drilled holes.
4. Tighten all bolts until the rock guard is secure. Do not crush the extrusions while tightening the hardware.

Installation Instructions

Single Axle Utility Trailer

Side Kits



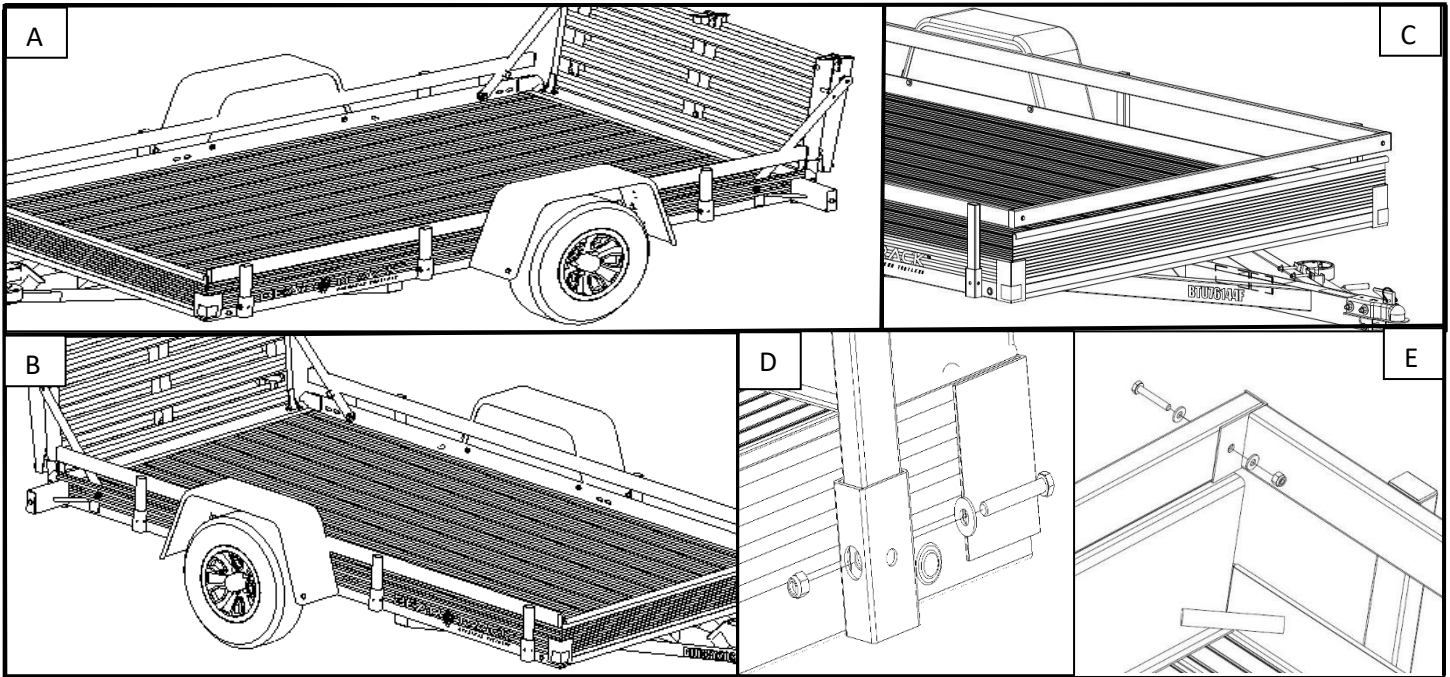
**** For side kit assembly, two or more people are recommended**

1. Identify the passenger side panel of the side kit (Figure B) and place it on the trailer by inserting the stakes into the stake pockets. Align the holes in the stake with those of the stake pocket and install the 3/8" x 2 1/2" bolts through these holes using the bolt configuration shown in Figure D, but do not tighten.
2. Identify the driver's side panel of the side kit (Figure A) and place it on the trailer by inserting the stakes into the stake pockets. Align the holes in the stake with those of the stake pocket and install the 3/8" x 2 1/2" bolts through these holes using the bolt configuration shown in Figure D, but do not tighten.
3. *(Only if adding an open front panel)* Once the sides are in place but not fastened, place the front panel in position (Figure C) and bolt into place using the 1/4" x 1 1/2" bolt configuration shown in figure E. Tighten the bolts.
4. Tighten the bolts of the side kit until secured. Do not crush the extrusions while tightening the hardware.

Installation Instructions

Single Axle Utility Trailer

1 Rail Side Kit



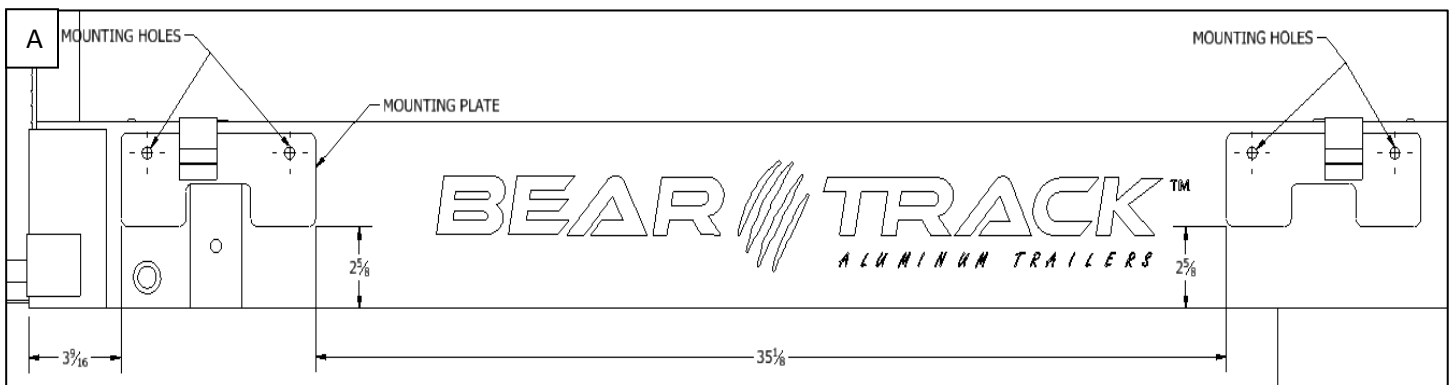
** For side kit assembly, two or more people are recommended

1. Identify the passenger side panel of the side kit (Figure B) and place it on the trailer by inserting the stakes into the stake pockets. Align the holes in the stake with those of the stake pocket and install the 3/8" x 2 1/2" bolts through these holes using the bolt configuration shown in Figure D, but do not tighten.
2. Identify the driver's side panel of the side kit (Figure A) and place it on the trailer by inserting the stakes into the stake pockets. Align the holes in the stake with those of the stake pocket and install the 3/8" x 2 1/2" bolts through these holes using the bolt configuration shown in Figure D, but do not tighten.
3. *(Only if adding an open front panel)* Once the sides are in place but not fastened, place the front panel in position (Figure C) and bolt into place using the 1/4" x 1 1/2" bolt configuration shown in figure E. Tighten the bolts.
4. Tighten the bolts of the side kit until secured. Do not crush the extrusions while tightening the hardware.

Installation Instructions

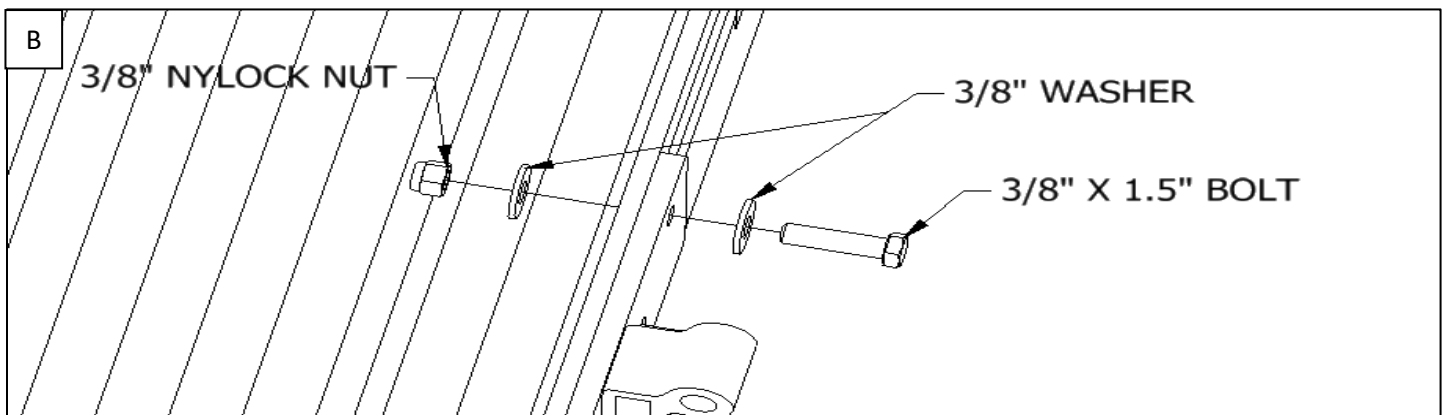
Standard Utility Bi-fold/Side Kit

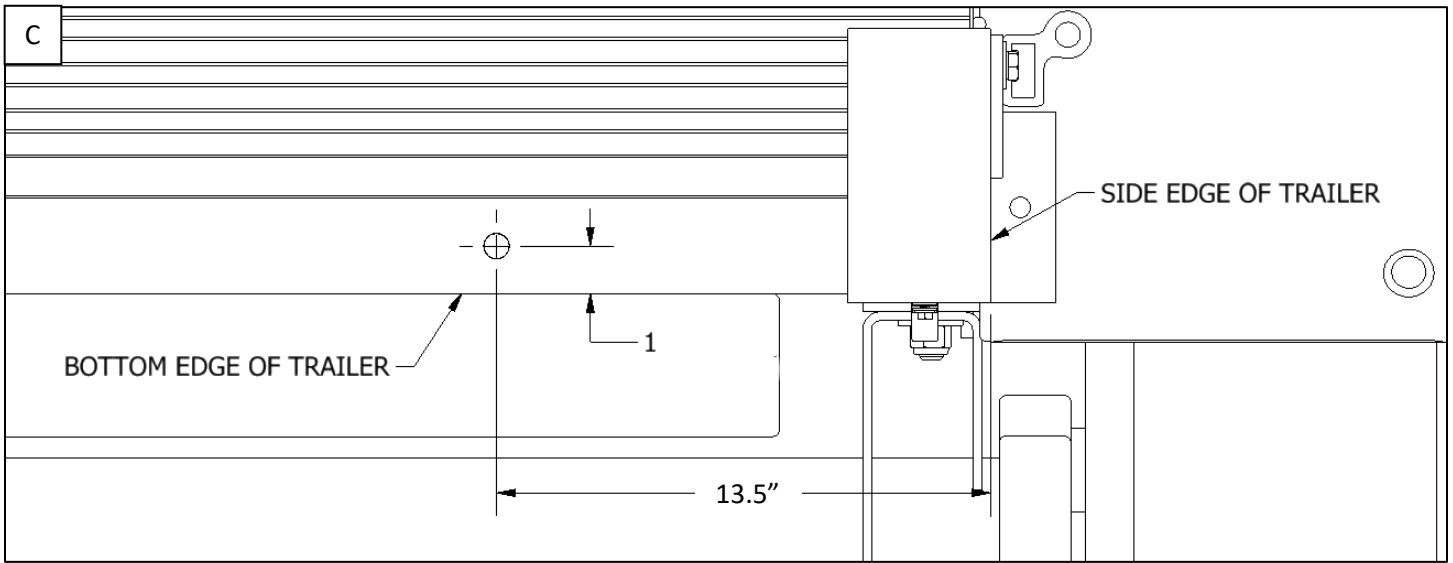
Note: The Bi-Fold/Side Kit accessory can be installed on either the passenger or driver's side, with or without rock guard, and side kit. The assembly instructions are the same regardless, but instructions and illustrations are for a *driver's* side bi-fold, without rock guard and side kit are provided here.



1. Installation of mounting brackets.

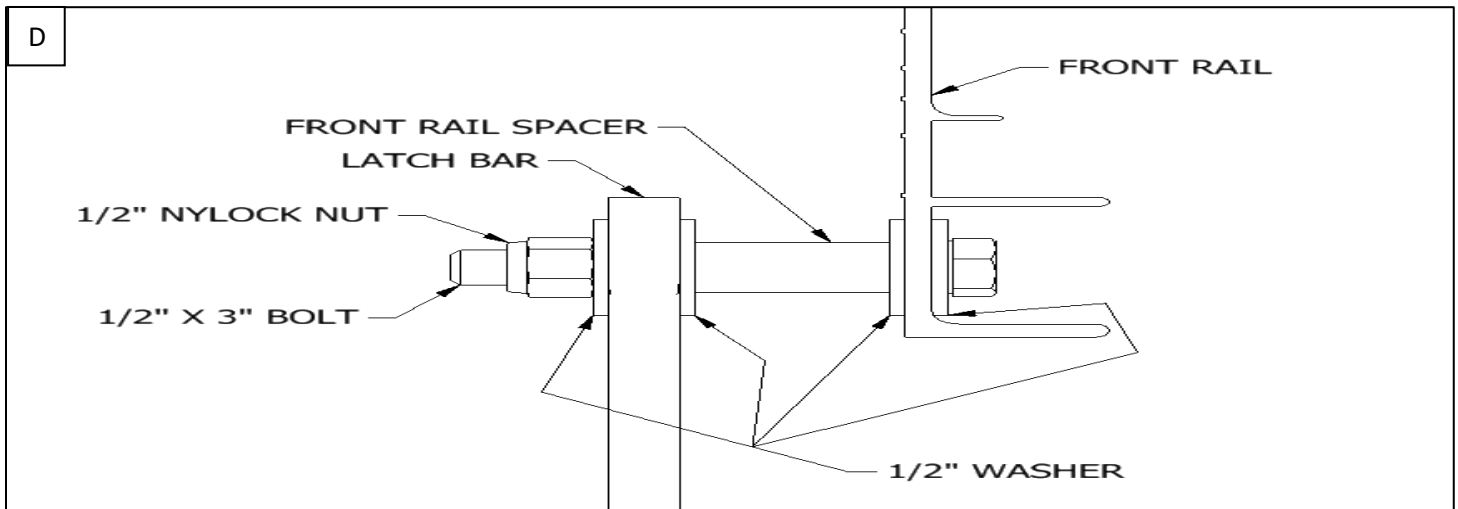
- a. Measure over from the front of the trailer 3-9/16" for the first mounting plate and 35-1/8" for the second mounting plate. The rectangular cutout will sit on top of the stake pocket or 2-5/8" from the bottom of the trailer (Figure A).
- b. Drill the four 3/8" pilot holes through the side rail of the trailer using the mounting plate as a template (Figure A).
- c. Once the holes are drilled through the side rail using the 3/8" X 1-1/2" bolts to secure them to the side rail (Figure B).





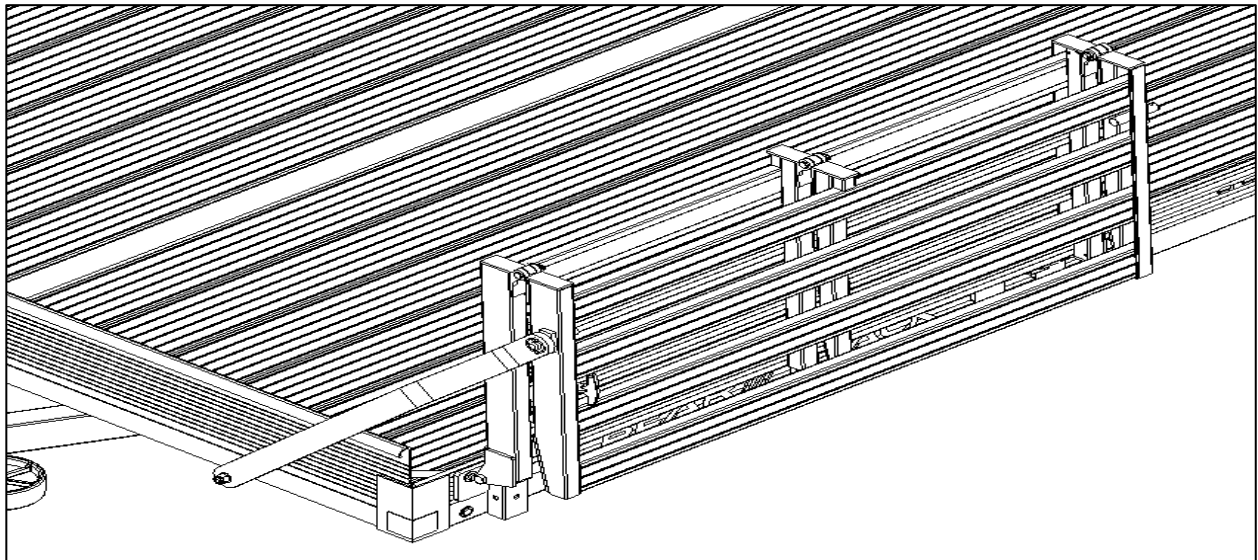
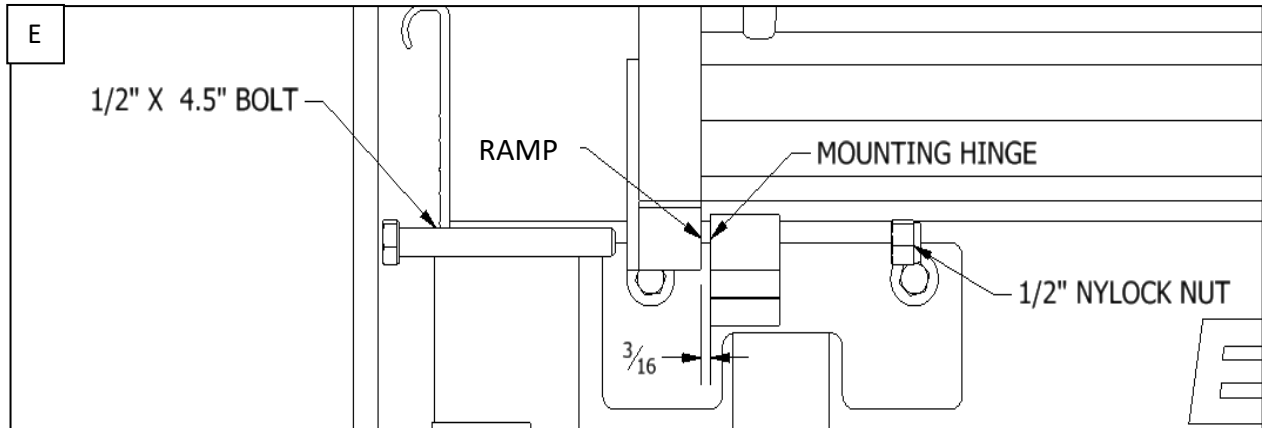
2. Installation of ramp latch bar.

- a. Measure over from the edge of the trailer 13-1/2" and up 1" from the bottom of the trailer and drill a 1/2" pilot hole (Figure C).
- b. Use Figure D to install the latch bar with the components provided. The head of the bolt should be on the back side of the front rail as shown.
- c. The order of components from the back of side rail to front is as follows (Figure D):
 - i. 1/2" Bolt
 - ii. 1/2" Washer
 - iii. Front rail
 - iv. Washer
 - v. Spacer
 - vi. 1/2" Washer
 - vii. Latch bar
 - viii. 1/2" Washer
 - ix. 1/2" Nylock nut



3. Installing Ramp.

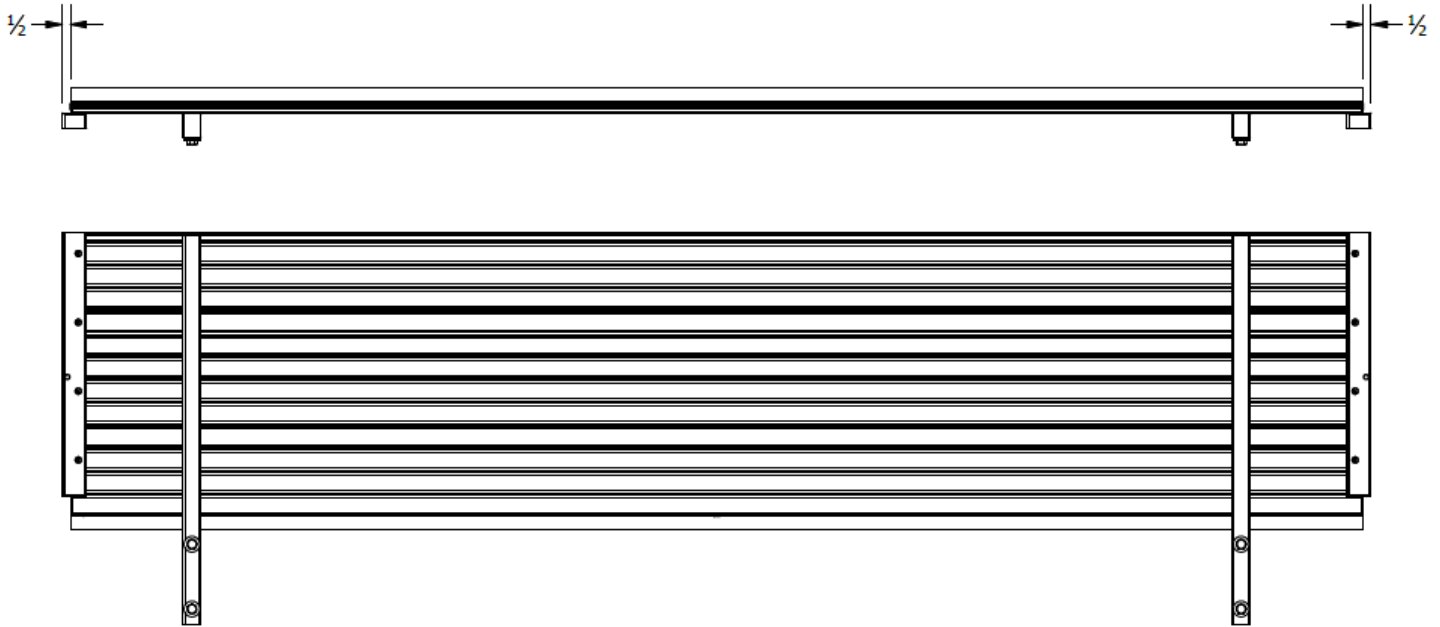
- a. After the mounting plate and latch bar are installed, move the ramp next to the trailer. Lift the ramp up to the mounting plate next to the hinge and place the bolt through the hinge and the ramp.
- b. Do not over tighten the mounting bolts closing the gap between the two. There should be about 3/16" gap between the hinge and the ramp (Figure E).



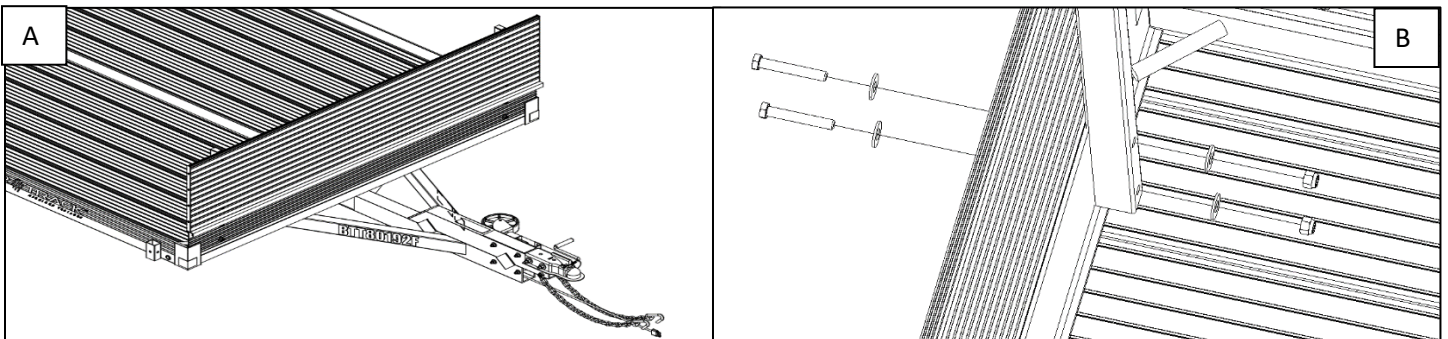
Installation Instructions

Standard Utility Trailers

Side Kit/Side Load

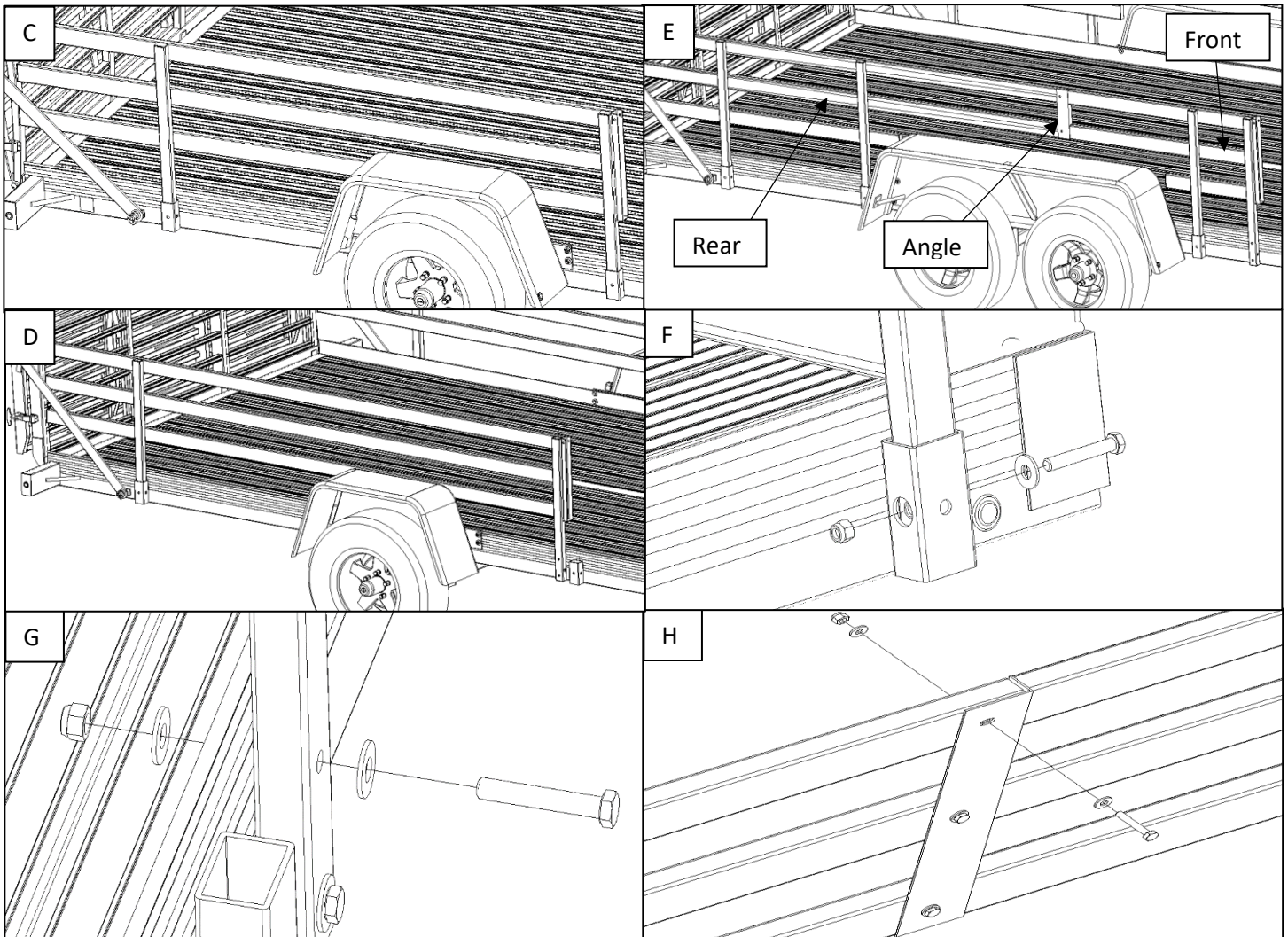


1. Place the channels on rock guard as shown above. The outer edges of the channels should be $\frac{1}{2}$ " out of the outer edges of the rock guard. The channels should be flush with the top of the rock guard and screwed on using hardware supplied.



2. Place the rock guard onto the trailer as shown in image A. The outer edges of the rock guard should be flush with the outer edges of the front rail of the trailer. The rock guard's stakes should be flush with the inner face of the front rail (Figure B) and raised off the bed of the trailer by $\frac{1}{4}$ ".
3. Hold or clamp the rock guard in place and, using the pre-drilled holes in the stakes as a template, drill $\frac{3}{8}$ " pilot holes through the front rail of the trailer.

4. Using the bolt configuration shown in image B, install bolts in the pre-drilled holes and tighten.

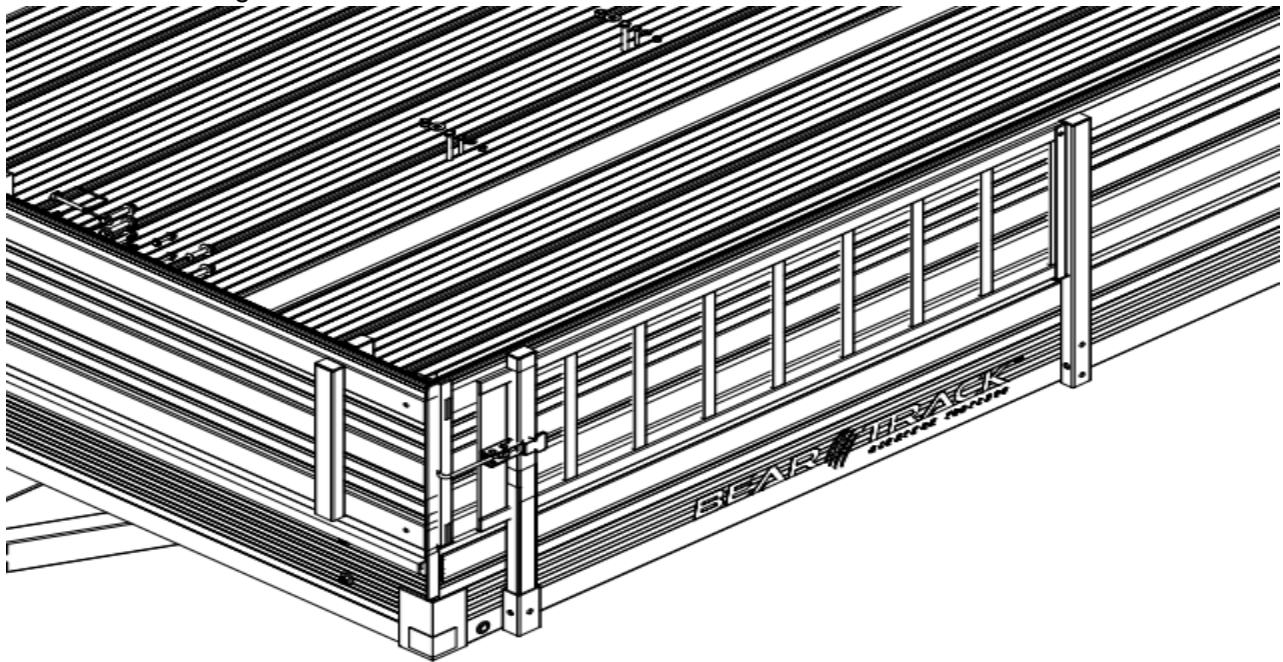


1. Attach the Side Kit:

a. 144" Trailers (Figure C)

- i. Identify the passenger side panel of the side kit and place on the trailer by inserting the stakes into the stake pockets. Align the holes in the stake with those of the stake pocket and install the 3/8" x 2 1/2" bolts through these holes using the bolt configuration shown in Figure F. Tighten the bolts.
- ii. Identify the driver's side panel of the side kit and place on the trailer by inserting the stakes into the stake pockets. Align the holes in the stake with those of the stake pocket and install the 3/8" x 2 1/2" bolts through these holes using the bolt configuration shown in Figure F. Tighten the bolts.

- b. 168" Trailers (Figure D)
- Identify the passenger side panel of the side kit and place on the trailer by inserting the stake into the stake pocket. Align the holes in the stake with those of the stake pocket and install the 3/8" x 2½" bolts through these holes using the bolt configuration shown in Figure F.
 - As shown in Figure D, Bolt in place using the 3/8" x 2" bolt configuration shown in Figure G.
 - Tighten all bolts.
 - Repeat steps i-iii to secure the driver's side panel.
- c. 192" Trailers (Figure E)
- Identify the rear-most passenger side panel of the side kit and place on the trailer by inserting the stakes into the stake pockets. Align the holes in the stake with those of the stake pocket and install the 3/8" x 2½" bolts through these holes using the bolt configuration shown in Figure F. Do not tighten the bolts.
 - Insert the stake of the front passenger side panel in the same fashion and bolt using the 3/8" x 2½" bolt configuration shown in Figure F. Ensure that the back panel fits within the angle of the front panel and that the holes align. Bolt the front and back panel together using the ¼" x 1 ½" bolts (Figure H), but do not tighten.
 - Clamp the front-most stake ensuring the bottom of the stake is flush with the bottom of the side rail. Drill two 3/8" pilot holes in the side rail using the holes on the stake as a template. Bolt in place using the 3/8" x 2" bolt configuration found in Figure G.
 - Tighten all bolts.
 - Repeat steps i-iv to secure the driver's side panel.
2. Place the ramps in both the driver and passenger side channels and secure the ramps by attaching the latch to the rock guard as shown below.

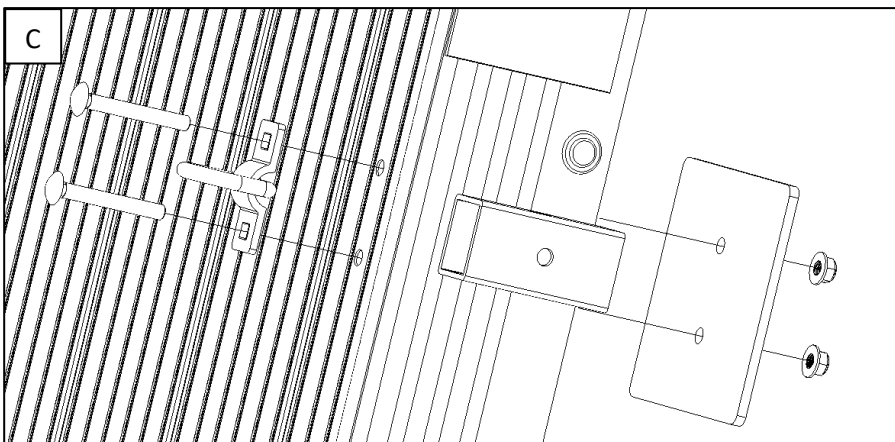
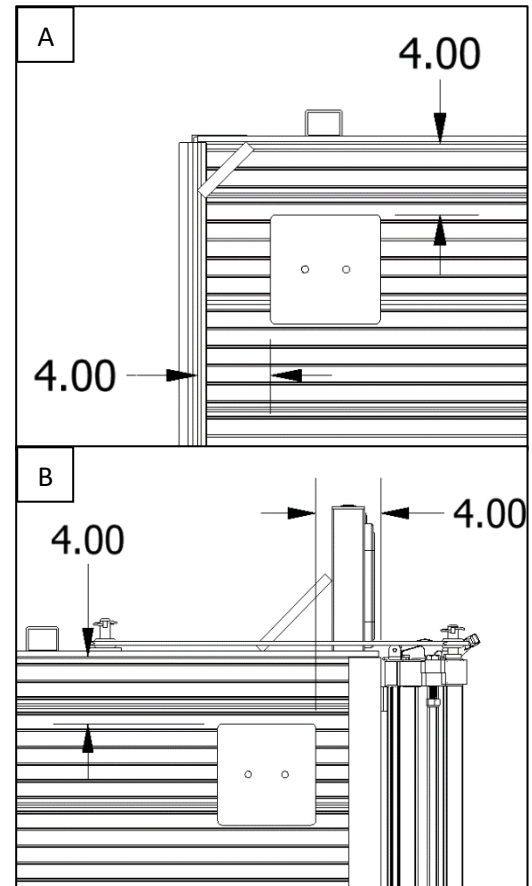


Installation Instructions

Single Axle Utility Trailers

D-Ring Tie Downs

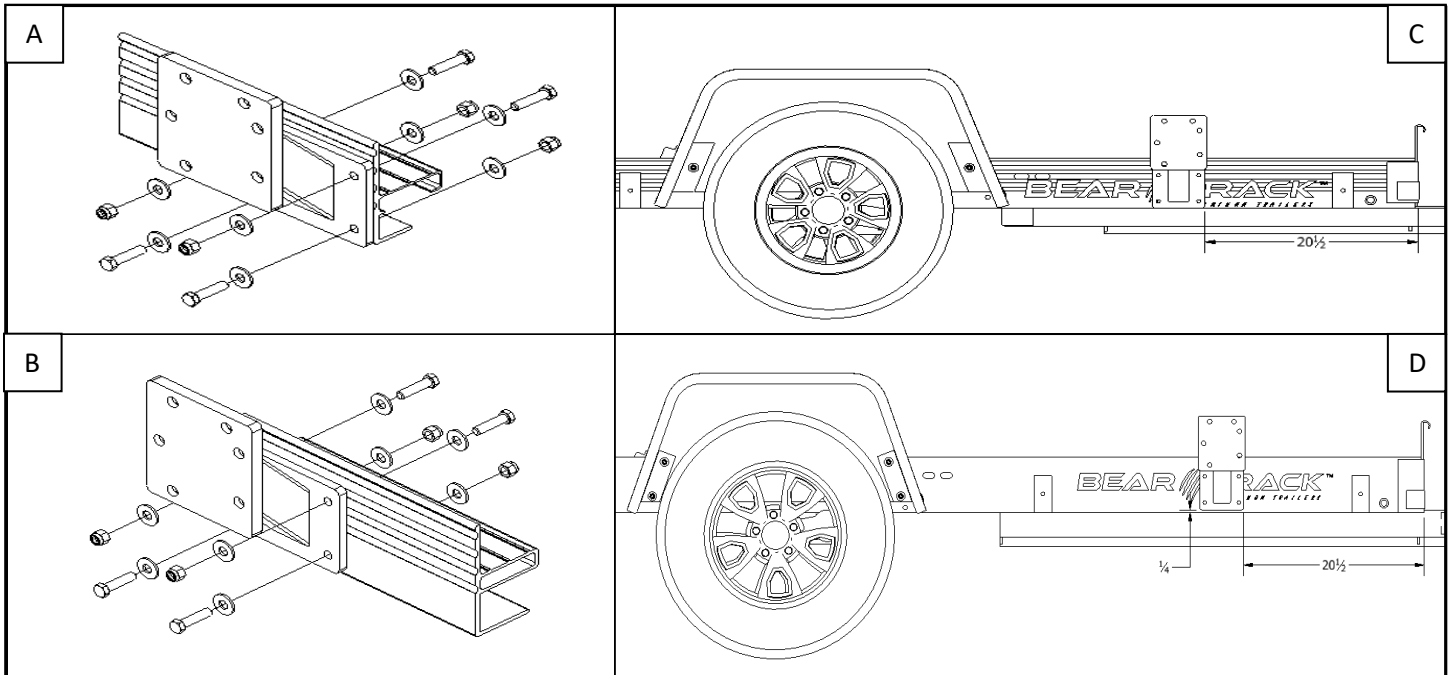
1. Place the D-ring backer plate onto the bed of the trailer making sure the holes go from front to back.
 - a. If mounting D-rings in the front of the trailer: For both the driver and passenger sides, place the bracket 4" from the inside of both the front and side rails of the trailer as shown in Figure A.
 - b. If mounting D-rings in the rear of the trailer: For both the driver and passenger sides, place the bracket 4" from the inside of the side rail and 4" from the rear end of the trailer as shown in Figure B.
2. Hold the bracket in place and drill one of the two 3/8" pilot holes through the bed of the trailer, using a hole in the bracket as a template. Place one of the two 3/8" x 3" carriage bolts through the drilled hole. Ensure the bracket is still aligned properly and drill the other 3/8" pilot hole through the trailer bed.
3. Remove the bolt used in step 2 and, placing the backer plate beneath the trailer, assemble the D-ring mount as shown in Figure C and tighten the bolts until secure. Do not crush the decking while tightening the hardware.



Installation Instructions

Single Axle Utility Trailer

Spare Tire Mount-Side Rail

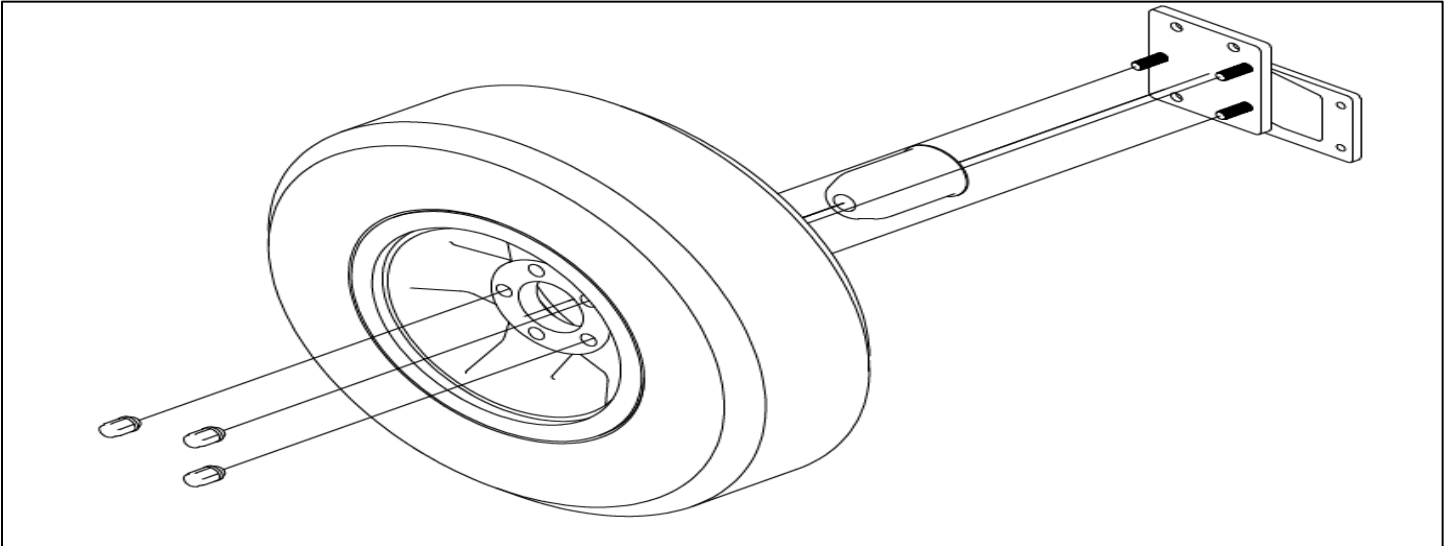


4. Drill Pilot Holes

- a. 96" & 120S" Trailers: See Images A & C
 - i. On the passenger side of the trailer, clamp tire mount bracket's back plate 20 1/2" in front of the fender making sure the bottom of the plate is flush with the bottom of the side rail. Drill the four 3/8" clearance holes and unclamp.
- b. 120F, 144", 168", & 180" Trailers: See Images B & D
 - i. On the passenger side of the trailer, clamp tire mount bracket's back plate 20 1/2" from the front of the trailer making sure the bottom of the plate is 1/4" from the bottom of the side rail. Drill the four 3/8" clearance holes and unclamp.

5. Fasten Bracket

- a. Align the tire mount bracket with the holes drilled in step 1. Fasten the tire mount bracket to the trailer using the 3/8" x 1 1/4" bolt configuration found in images A & B.



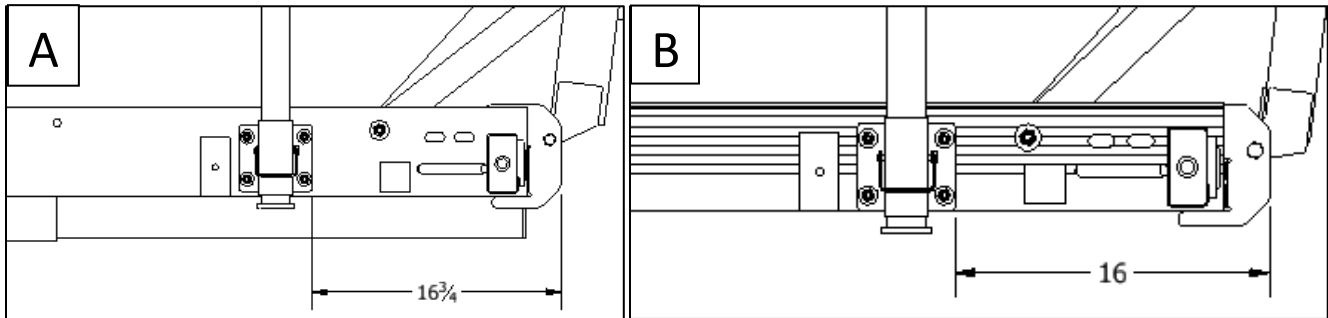
6. Attach the Tire to the Bracket

- a. Place the center cap through the middle hole of the tire.
- b. Place the three, $\frac{1}{2}$ " x $1 \frac{1}{2}$ " bolts through the holes in the bracket etched with a "5" for 5-bolt wheel, or "6" for a 6-bolt wheel. The 5-bolt wheel is shown in the picture. Place the tire on the mounting bracket ensuring the holes of the tire's rim align with the bolts. Tighten using the lug nuts until the tire is securely fastened.

Installation Instructions

Traditional Utility Trailers

Leg Stabilizer



1. Drill Pilot Holes

- a. Drilling pilot holes 96 and 120S series traditional trailers (2200 GVW Trailers)
 - i. Place plate on driver side or passenger side rail 16" from the back of the trailer, and the mounting plate flush to the bottom of the trailer. Clamp to hold into place. Drill the four, 3/8 clearance holes. (Figures B and D)
- b. Drilling pilot holes 120F, 144, 168, and 192 traditional trailers
 - i. Place plate on driver side or passenger side rail 16" from the back of the trailer, and the mounting plate 3/8 up from bottom of the trailer. Clamp to hold into place. Drill the four, 3/8 clearance holes. (Figures B and C)
- c. Drilling pilot holes 180 traditional trailers
 - i. Place plate on driver side or passenger side rail 16 3/4" from the back of the trailer, and the mounting plate 3/8 up from bottom of the trailer. Clamp to hold into place. Drill the four, 3/8 clearance holes. (Figures A and C)

2. Bolting to trailer

- i. Bolt the bracket to the trailer through the holes drilled in previous step. (Head of the bolts should be on the inside of the trailer as shown in figures C and D.)

