

# BEAR TRACK™

ALUMINUM TRAILERS



ALUMINUM TRAILERS

TOUGH. DURABLE. QUALITY.

[BEARTRACKTRAILERS.COM](http://BEARTRACKTRAILERS.COM)

A Product of **voyager**  
INDUSTRIES



# TOUGH YOU CAN DEPEND ON.

**Tough. Durable. Quality.** Bear Track Aluminum Trailers™ are designed and engineered to be the most dependable trailer on the market, ready for all kinds of use from your toughest jobs, work or play. From hauling your work equipment from job to job, to hauling your toys up the gnarly mountain pass for a weekend of adventure, Bear Track™ is your trailering solution.



MADE IN THE USA



## A WARRANTY AS STRONG AS THE TRAILER

We manufacture the toughest trailer, and to back that statement up we offer an industry-leading **5 Year Limited Warranty** on aluminum decked trailers and **3 Year Limited Warranty** on wood decked trailers.



# WHAT'S INSIDE

/// A Product of Voyager Industries 2

/// Bear Track Craftsmanship 3

/// Why Choose Bear Track? 4

/// Bear Track Products

- Utility Trailers Single Axle 5
- Utility Trailers Tandem Axle 6
- Utility Trailer Ramp Options 7
- Tilt Utility Trailers 8
- Car Haulers 9
- Recreational Trailers 10
- Parts & Accessories 11

/// Model Specifications 13



## A PRODUCT OF voyager INDUSTRIES™

### ABOUT US

Located in the heart of the Minnesota lakes area, Voyager Industries is a leading manufacturer, distributor, and fabricator of aluminum. Voyager Industries manufactures multiple products trusted by customers around the world. Proprietary brands include **Bear Track Trailers**, **Yetti Fish Houses™**, **Titan Deck®**, and **Voyager Dock®**.

We understand the needs and demands of our industry for quality performing products. We are driven to create those products while exceeding our customers' expectations, by engineering and constructing industry leading products that are backed with industry leading warranties and support. Through innovation and hard work our team is proud to manufacture quality products that are time-tested to be durable and reliable.

*Driven through innovation, integrity, and quality craftsmanship.*

**Voyager-Industries.com**  
**800-980-4940**



# ENGINEERED

# FOR STRENGTH & DURABILITY



## ALL ALUMINUM CONSTRUCTION

Lightweight and virtually maintenance-free, our aluminum frame ensures durability. Choose from aluminum or wood deck trailers for strength and style.



## DECKING THAT'S BUILT TO LAST

Bear Track Trailers prioritizes lasting performance. Our trailers, whether aluminum or wood deck, feature premium decking designed to withstand the test of time.



## RUBBER TORSION AXLE *W/ EASY-ACCESS GREASE FITTING*

Design reduces frame flex in cross winds and on rough roads. There's no shock transfer from wheel to wheel and it lasts longer than traditional spring axles.



## TOUCHPOINT WELD SYSTEM

Strategically placed welds where the deck meets the cross members add strength and rigidity to the trailer. You won't find this on the competition! Aluminum deck trailers only.



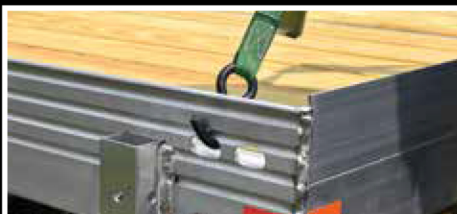
## LED LIGHTING

LED lighting to match our trailers durability. Built to DOT and NATM specifications.



## ENCLOSED AND JACKETED WIRING

Bear Track's WireGuard system ensures your wiring is protected from the elements and is something you never need to worry about. The harness is corrosion resistant and virtually maintenance free.



## SIDE RAIL TIE DOWNS

Standard on most utility trailers, enjoy 2 or 3 integrated tie downs on each side.



## WISHBONE TONGUE DESIGN

All Bear Track trailers come standard with a wishbone tongue design, adding extra strength to the tongue and trailer frame – one tough trailer!



## BEAR TRACK FIT AND FINISH

Bear Track Trailers are built with an industry-leading fit and finish quality. For over 20 years our team has taken pride in providing customers with the best-looking trailer, from aesthetics, to weld quality.





## ALL ALUMINUM RIMS

All-aluminum rims to match an all-aluminum trailer. Bear Track trailer rims are maintenance free, and sharp looking. *Optional upgrade on wood deck trailers.*



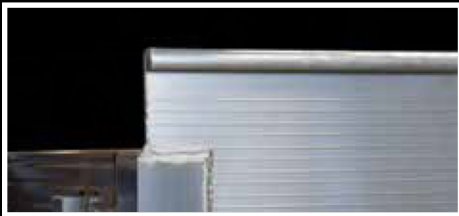
## TONGUE JACK

Our trailers are manufactured with the customer in mind. All come standard with tongue jacks for your convenience.



## BOLT-ON ALUMINUM FENDERS

Whether you need to remove the fenders for loading, or damage occurred, removal is as simple as a few bolts on a Bear Track.



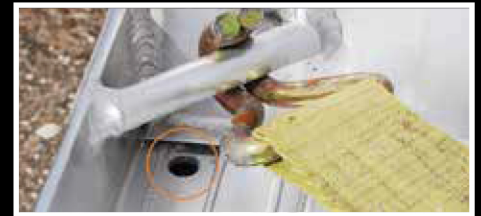
## RAISED FRONT RAIL WITH CURVED EDGE

Exclusive to our aluminum deck trailers, the curled front rail offers added rigidity and convenient tie-down points for secure hauling.



## CUSTOM EXTRUDED SIDE RAILS

For both strength and esthetics, Bear Track's proprietary extrusions consistently get the job done.



## SMARTDRAIN SYSTEM NORTHERN CLIMATE PROTECTION

Eliminates pooling water from the deck and inside the trailer framing – no unnecessary water weight or freeze risks.

# WHY CHOOSE A

# BEAR TRACK?

- /// Quality & Craftsmanship
- /// Lower Maintenance
- /// Exceptional Trailer Practicality & Design
- /// Fuel Economy
- /// Best Value backed by an Industry Leading Warranty

**Bear Track aluminum trailers** are built tough like you have never seen before. Manufactured to the highest standards, Bear Track trailers are engineered to withstand the harshest environments and toughest loads!





# UTILITY TRAILERS

# SINGLE AXLE

10 MODELS



BTU65120S w/ 3-rail open side kit and 2' rock guard

## SINGLE 2,200 LB AXLE TRAILERS

**GVWR:** Up to 2,200 LB

**Carrying Capacity:** Up to 1800 LB

**Length:** 96" - 144"

**Standard Ramp:** Fold Flat Bi-Fold Ramp: Fold flat ramps come in two options: straight or bi-fold

**Ramp Length:** 45"

**Weight Rating:**

Total: 1,800 LB | Per Axle: 900 LB | Per Wheel: 450 LB  
See inside back cover for complete product specifications

6 MODELS



BTU80168F with optional 10" side and front kit

## SINGLE 3,500 LB AXLE TRAILERS

**GVWR:** Up to 3,500 LB

**Carrying Capacity:** Up to 2,780 LB

**Length:** 120" - 168"

**Standard Ramp:** Fold Flat Straight End Ramp: Fold flat ramps come in two options: straight or bi-fold

**Ramp Length:** 46"

**Weight Rating:**

Total: 3,600 LB | Per Axle: 2,000 LB | Per Wheel: 1,000 LB  
See inside back cover for complete product specifications

1 MODEL



BTU80180F

## SINGLE 4,400 LB AXLE TRAILERS

**GVWR:** Up to 4,400 LB

**Carrying Capacity:** Up to 3,535 LB

**Length:** 180"

**Standard Ramp:** Fold Flat Straight End Ramp: Fold flat ramps come in two options: straight or bi-fold

**Ramp Length:** 46"

**Weight Rating:**

Total: 3,600 LB | Per Axle: 2,000 LB | Per Wheel: 1,000 LB  
See inside back cover for complete product specifications



MODEL BTU76144S



MODEL BTU76144F with 1 rail front and sides



MODEL BTU80168F



# TANDEM AXLE

4 MODELS



## TANDEM 2,200 LB AXLE TRAILERS

**GVWR:** Up to 4,400 LB

**Carrying Capacity:** Up to 3,505 LB

**Length:** 168" - 192"

**Standard Ramp:** Fold Flat Straight End Ramp:  
Fold flat ramps come in two options: straight or bi-fold

**Ramp Length:** 46"

**Weight Rating:**

Total: 3,600 LB | Per Axle: 2,000 LB | Per Wheel: 1,000 LB

See inside back cover for complete product specifications

BTT80192F

## TOP ACCESSORIES

- Spare Tire and Mount
- Front Rock Guard
- Open Side Kit (1, 2, and 3 Rail)
- Solid Side Kit (1' and 2')
- D-Ring Tie Downs



## BEST USES

- Commercial Lawn Mowers
- Jeeps and Small Vehicles
- ATV/UTV's
- Building Supplies
- Light Duty Tractors
- Light Duty Equipment

9 MODELS



## TANDEM 3,500 LB AXLE TRAILERS

**GVWR:** Up to 7,000 LB

**Carrying Capacity:** Up to 5,810 LB

**Length:** 168" - 267"

**Standard Ramp:** Straight End Ramp: Optional  
Upgrade to HD Bi-Fold Ramp

**Ramp Length:** 61"

**Weight Rating:**

Total: 4,500 LB | Per Axle: 3,500 LB | Per Wheel: 1,750 LB

See inside back cover for complete product specifications

BTT81240SL



MODEL BTT80192F with rock guard and 3 rail side load open side kit



MODEL BTT81194S with 3 rail open front and 3 rail open sides



MODEL BTT81194S with rock guard and 24" solid sides



# TILT UTILITY TRAILERS

1 MODELS



## SINGLE 2,200 LB AXLE TILT TRAILER

**GVWR:** Up to 2,200 LB  
**Carrying Capacity:** Up to 1,780 LB  
**Length:** 120"  
**Tilt Angle:** 10.5 degrees

### BEST USES

- ATVs / UTVs
- Landscaping tools
- Lawn Mowers
- Construction Materials

3 MODELS



## SINGLE 3,500 LB AXLE TILT TRAILER

**GVWR:** Up to 3,500 LB  
**Carrying Capacity:** Up to 2,815 LB  
**Length:** 128" - 176"  
**Tilt Angle:** 12 - 16°

### BEST USES

- Vehicles w/ Low Clearance
- Golf Carts
- ATVs / UTVs
- Lawn Mowers

2 MODELS



## SINGLE 5,200 LB AXLE TILT TRAILER

**GVWR:** Up to 5,000 LB  
**Carrying Capacity:** Up to 4,115 LB  
**Length:** 152" - 176"  
**Tilt Angle:** 14 - 16°

### BEST USES

- Vehicles w/ Low Clearance
- ATVs / UTVs
- Light Duty Equipment
- Lawn Mowers

## TOP ACCESSORIES

- Spare Tire and Mount
- Front Rock Guard
- 25" Open Side Kits
- 24" Solid Side Kits
- D-ring Tie Downs





# ENCLOSED TRAILERS

1 MODEL



## SINGLE 3,500 LB AXLE TRAILER

**GVWR:** Up to 2,990 LB

**Carrying Capacity:** Up to 1,660 LB

**SIZE:** 6' x 12' V-Front

*See inside back cover for complete product specifications*

### BEST USES

- Motorcycles,
- Lawn Mowers
- ATVs
- Tools & Equipment

## TOP ACCESSORIES

- Exterior Spare Tire and Mount
- Additional Tie Downs



MADE IN THE USA



1 MODEL



## TANDEM 3,500 LB AXLE TRAILER

**GVWR:** Up to 7,000 LB

**Carrying Capacity:** Up to 4,730 LB

**Size:** 7.5' x 16' V-front

*See inside back cover for complete product specifications*

### BEST USES

- Small Cars
- Commercial Equipment
- Recreational Gear
- Construction Materials



# CAR HAULERS

4 MODELS



BTC81216B

## CLASSIC

**GVWR:** Up to 9,990 LB

**Carrying Capacity:** Up to 8,115 LB

**Length:** 192" - 240"

*See inside back cover for complete product specifications*

### BEST USES

- Cars and Trucks
- Medium Duty Equipment
- Material Hauling
- ATV/UTV's

## TOP FEATURES

- Bolt-On Aluminum Fenders
- 4 D-Ring Tie Downs

## TOP ACCESSORIES

- Spare Tire and Mount
- Front Rock Guard
- Rear Stabilizing Legs
- Back-up Lights



MADE IN THE USA



BTC81242THD

3 MODELS



BTC81242T

## TILT DECK

**Manual Hydraulic:**

**GVWR:** Up to 9,990 LB

**Carrying Capacity:** Up to 8,050 LB

**Length:** 218" - 242"

**Tilt Angle:** 8 - 9° includes control valve

*See inside back cover for complete product specifications*

### BEST USES

- Cars and Trucks
- Medium Duty Equipment
- Material Hauling
- ATV/UTV's



MODEL BTC81216B



MODEL BTC81242T



# RECREATIONAL TRAILERS

3 MODELS



## ATV

**GVWR:** Up to 2,990 LB

**Carrying Capacity:** Up to 2,330 LB

**Length:** 120" - 168"

*See inside back cover for complete product specifications*

### TOP FEATURES

- Side Loading Only
- Curled Front Rail With Integrated Ramp Storage
- All Aluminum Trailer & Deck

### TOP ACCESSORIES

- Front Rock Guard
- Spare Tire and Mount
- Traction Mats

3 MODELS



## MOTORCYCLE

**GVWR:** Up to 2,550 LB

**Carrying Capacity:** Up to 2,100 LB

**Length:** 120" - 132"

*See inside back cover for complete product specifications*

### TOP FEATURES

- V-Front Design
- Aerosmart Bi-fold End Ramp
- Stake Pockets
- All Aluminum Trailer & Deck

### TOP ACCESSORIES

- Spare Tire and Mount
- V Front Rock Guard
- 24" Open Side Kit
- Wheel Chock
- D-Ring Tie Downs

6 MODELS



## SNOWMOBILE

**GVWR:** Up to 4,400 LB

**Carrying Capacity:** Up to 3,100 LB

**Length:** 120" - 264"

*See inside back cover for complete product specifications*

### TOP FEATURES

- All-Aluminum Frame
- Custom Extruded Deep Side Rail
- 5/8" Marine Grade Decking

### TOP ACCESSORIES

- Spare Tire and Mount
- Salt Shield / Drive Off Ramps (Select Models)
- Traction Mats
- Tie Down Bar w/Crank Handle



MODEL BTX82144S



MODEL BTM65120S



MODEL BTS99192S





## PARTS & ACCESSORIES



MADE IN THE USA

### UTILITY TRAILER STRAIGHT FRONT ROCK GUARDS

*(extruded aluminum, 24" total height)*

53" Front Rock Guard, 24" Total Height  
 65" Front Rock Guard, 24" Total Height  
 76" Front Rock Guard, 24" Total Height  
 79" Front Rock Guard, 24" Total Height  
 80" Front Rock Guard, 24" Total Height  
 81" Front Rock Guard, 24" Total Height  
 82" Front Rock Guard, 24" Total Height

### MOTORCYCLE TRAILER FRONT ROCK GUARDS

V-Front Rock Guard (53 X 120V Motorcycle Trailer)  
 V-Front Rock Guard (65 X 120V Motorcycle Trailer)  
 V-Front Rock Guard (76 X 132V Motorcycle Trailer)

### 81" WIDE TANDEM AXLE UTILITY TRAILER ACCESSORIES

Bolt-on Stake Pocket, Large  
 1 - Recessed D-Ring Tie Down Kit (6,000 lb)  
 Rear Stabilizing Leg Kit (contains parts for 1 side of trailer)  
 Reverse Light Kit

### UTILITY TRAILER STRAIGHT FRONT ROCK GUARDS

*(extruded aluminum, 12" total height, for use with 12" solid sides)*

53" Front Rock Guard, 12" Total Height  
 65" Front Rock Guard, 12" Total Height  
 76" Front Rock Guard, 12" Total Height  
 80" Front Rock Guard, 12" Total Height  
 82" Front Rock Guard, 12" Total Height

### CAR HAULER ACCESSORIES

81" Front Rock Guard  
 Bolt-on Stake Pockets  
 Rear Stabilizing Leg Kit  
 1 - Recessed D-Ring Tie Down Kit (6,000 lb)  
 Front Aluminum Tool Box  
 Kit, Mini Ramp - 3-Board (Tilt CH)  
 Reverse Light Kit

### SIDE RAMPS & END GATES

Bi-Fold Side Gate (Utility and HD Utility)  
 79" Tilt Utility End Kit  
 81" Tilt Utility End Kit  
 81" Slingshot® Ramp Accessory (Fits BTU81176T)  
 53" x 48" Straight One Piece Ramp  
 65" x 48" Straight One Piece Ramp  
 76" x 48" Straight One Piece Ramp  
 80" x 48" Straight One Piece Ramp  
 82" x 48" Straight One Piece Ramp



## SIDE KIT RAILS

### UTILITY TRAILER OPEN FRONT KIT

(1 Rail Front, Used with 10" and 12" Open Side Kits)

1-Rail, 53"  
1-Rail, 65"  
1-Rail, 76"  
1-Rail, 80"  
1-Rail, 82"

### UTILITY TRAILER OPEN SIDE KITS

(12" tall, 2 rail driver and passenger sides, requires front kit)

2-Rail, 12" x 96"  
2-Rail, 12" x 120"  
2-Rail, 12" x 144"  
2-Rail, 12" x 168"  
2-Rail, 12" x 180"  
2-Rail, 12" x 192"

### UTILITY TRAILER OPEN SIDE KITS

(10" tall, 1 rail driver and passenger sides, requires front kit or rock guard)

1-Rail, 10" x 120"  
1-Rail, 10" x 144"  
1-Rail, 10" x 180"

### UTILITY TRAILER OPEN FRONT KIT

(24" tall, 3 rail front, sides required)

3-Rail, 53"  
3-Rail, 65"  
3-Rail, 76"  
3-Rail, 80"  
3-Rail, 81"  
3-Rail, 82"

### UTILITY TRAILER OPEN SIDE KITS

(24" tall, 3 rail driver and passenger sides, requires front kit or rock guard)

3-Rail, 24" x 96"  
3-Rail, 24" x 120"  
3-Rail, 24" x 144"  
3-Rail, 24" x 168"  
3-Rail, 24" x 170"  
3-Rail, 24" x 180"  
3-Rail, 24" x 192"  
3-Rail, 24" x 194"  
3-Rail, 24" x 218"  
3-Rail, 24" x 242"

## ELECTRIC BRAKE REPLACEMENT PARTS

Breakaway Kit with Charger

### UTILITY TRAILER SOLID SIDE KITS

(24" tall, passenger and drivers side, requires front kit or rock guard)

24" x 96"  
24" x 120"  
24" x 128"  
24" x 144"  
24" x 152"  
24" x 168"  
24" x 170"  
24" x 176"  
24" x 180"  
24" x 194"  
24" x 218"  
24" x 242"

### UTILITY TRAILER SOLID SIDE KITS

(12" tall, passenger and drivers side, requires front kit)

12" x 96"  
12" x 120"  
12" x 144"  
12" x 168"  
12" x 180"

### BI-FOLD SIDE LOAD OPEN SIDE KITS

3-Rail, 24" x 144"  
3-Rail, 24" x 168"  
3-Rail, 24" x 180"  
Bi-fold Side Gate (Utility and HD Utility, doesn't require sides or front)

### SIDE LOAD OPEN SIDE KITS (requires rock guard)

3-Rail, 24" x 144"  
3-Rail, 24" x 168"  
3-Rail, 24" x 192"

### TILT TRAILER OPEN SIDE KITS

79" Front Rail Kit (open)  
81" Front Rail Kit (open)  
120" Open Side Kit (25" tall, no end gate, fits 128")  
144" Open Side Kit (25" tall, no end gate, fits 152")  
168" Open Side Kit (25" tall, no end gate, fits 176")

### MOTORCYCLE TRAILER OPEN SIDE KITS

120" V Open Side Kit (24" tall, fits 53" and 65" wide)  
76" x 132" V Open Side Kit (24" tall)  
80" x 142" V Open Side Kit (24" tall)

## SL TRAILER SIDE KITS & RAMPS

168" Single Rail Solid Side Kit  
192" Single Rail Solid Side Kit  
216" Single Rail Solid Side Kit  
240" Single Rail Solid Side Kit

168" 2-Rail Open Side Kit  
192" 2-Rail Open Side Kit  
216" 2-Rail Open Side Kit  
240" 2-Rail Open Side Kit

81" Front Rock Guard, 24" Solid Ramps  
81" Front Rock Guard, 24" Open Ramps

## SPARE TIRE CARRIER

Spare Tire Side Rail Mount  
Spare Tire Tongue Mount  
U Bolt Tire Carrier  
(snowmobile trailers only)

## MOTORCYCLE TRAILER WHEEL CHOCKS

4.5" Wheel Chock  
7" Wheel Chock

## TIRES/WHEELS

10" Painted Spoke Wheel and Tire  
13" Painted Spoke Wheel and Tire  
13" Aluminum Wheel and Tire  
14" Painted Spoke Wheel and Tire  
14" Aluminum Wheel and Tire  
15" Aluminum Wheel and Tire (6 bolt)  
15" Aluminum Wheel and Tire (5 bolt)  
15" Painted Silver Steel Spoke Wheel and Tire

## LIGHTS & ELECTRICAL

LED Utility Tail Light (right)  
LED Utility Tail Light (left)  
LED Utility Rear I.D. Bar  
LED Utility Clearance Light  
Utility Tail Light (right)  
Utility Tail Light (left)  
Utility Rear I.D. Bar (mid/rear)  
Utility Clearance Light (front/side)

## END GATE PARTS

21.5" End Gate Brace  
29.5" End Gate Brace  
33.25" End Gate Brace  
33.5" End Gate Brace  
Passenger Side End Gate Brace  
(BTU76144 with 3,500# axle)  
Driver Side End Gate Brace  
(BTU76144 with 3,500# axle)  
Rubber Latch Handle (medium)  
Rubber Grommet (for end gate brace)

## FENDERS

### DRIVER SIDE

9" Utility Fender  
10" Utility Fender  
10" Utility Fender  
9" Tilt Utility Fender  
10" Tilt Utility Fender  
10" Utility Fender

### PASSENGER SIDE

9" Utility Fender  
10" Utility Fender  
10" Utility Fender  
9" Tilt Utility Fender  
10" Tilt Utility Fender  
10" Utility Fender

### MISC. FENDERS

Car Hauler Fender  
(Driver and Passenger Side)  
HD Utility  
(Driver and Passenger Side)  
10" Backer Mount (Driver Side)  
10" Backer Mount (Passenger Side)

### Axle

Single  
Single  
Tandem  
Single  
Single  
Single 3.5

### Axle

Single  
Single  
Tandem  
Single  
Single  
Single 3.5

### Axle

Tandem  
Tandem

# MODEL SPECIFICATIONS



MADE IN THE USA

## SINGLE AXLE UTILITY TRAILERS

Model	Bed Width	Bed Length	Carrying Capacity	GVWR	Axle	No. of Axles	Tire Size	Trailer Weight
BTU53096S	53"	96"	1,800 lbs	2,100lbs	2,200# Torsion	1	ST175-80-R13-C	300 lbs
BTU53120S	53"	120"	1,800 lbs	2,165 lbs	2,200# Torsion	1	ST175-80-R13-C	365 lbs
BTU65096S	65"	96"	1,800 lbs	2,125 lbs	2,200# Torsion	1	ST175-80-R13-C	325 lbs
BTU65120S	65"	120"	1,800 lbs	2,190 lbs	2,200# Torsion	1	ST175-80-R13-C	390 lbs
BTU65120W	65"	120"	1,700 lbs	2,200 lbs	2,200# Torsion	1	ST175-80-R13-C	500 lbs
BTU65144S	65"	144"	1,775 lbs	2,200 lbs	2,200# Torsion	1	ST175-80-R13-C	425 lbs
BTU76120S	76"	120"	1,775 lbs	2,190 lbs	2,200# Torsion	1	ST175-80-R13-C	415 lbs
BTU76144S	76"	144"	1,750 lbs	2,190 lbs	2,200# Torsion	1	ST175-80-R13-C	440 lbs
BTU82120S	82"	120"	1,775 lbs	2,200 lbs	2,200# Torsion	1	ST175-80-R13-C	425 lbs
BTU82144S	82"	144"	1,750 lbs	2,200 lbs	2,200# Torsion	1	ST175-80-R13-C	450 lbs
BTU76120F	76"	120"	2,430 lbs	2,990 lbs	3,500# Torsion	1	ST205-75-R15-C	560 lbs
BTU76144F	76"	144"	2,390 lbs	2,990 lbs	3,500# Torsion	1	ST205-75-R15-C	600 lbs
BTU76144W	76"	144"	2,350 lbs	2,990 lbs	3,500# Torsion	1	ST205-75-R14-C	640 lbs
BTU80144F	80"	144"	2,320 lbs	2,990 lbs*	3,500# Torsion	1	ST205-75-R15-C	670 lbs
BTU80168F	80"	168"	2,270 lbs	2,990 lbs*	3,500# Torsion	1	ST205-75-R15-C	720 lbs
BTU80168W	80"	168"	2,195 lbs	2,990 lbs*	3,500# Torsion	1	ST205-75-R14-C	795 lbs
BTU80180F	80"	180"	3,535 lbs	4,400 lbs	4,400# Torsion	1	ST205-75-R15-D	865 lbs

\*GVWR and Carrying Capacity listed without electric brakes

## TANDEM AXLE UTILITY TRAILERS

Model	Bed Width	Bed Length	Carrying Capacity	GVWR	Axle	No. of Axles	Tire Size	Trailer Weight
BTT80168F	80"	168"	2,130 lbs	2,990 lbs*	2,200# Torsion	2	ST175-80-R13-C	860 lbs
BTT80168F	80"	168"	3,505 lbs	4,400 lbs	2,200# Torsion	2	ST175-80-R13-C	895 lbs
BTT80192F	80"	192"	2,080 lbs	2,990 lbs*	2,200# Torsion	2	ST175-80-R13-C	910 lbs
BTT80192F	80"	192"	3,455 lbs	4,400 lbs	2,200# Torsion	2	ST175-80-R13-C	945 lbs
BTT81170S	81"	170"	5,810 lbs	7,000 lbs	3,500# Torsion	2	ST205-75-R14-C	1,190 lbs
BTT81194S	81"	194"	5,760 lbs	7,000 lbs	3,500# Torsion	2	ST205-75-R14-C	1,240 lbs
BTT81218S	81"	218"	5,710 lbs	7,000 lbs	3,500# Torsion	2	ST205-75-R14-C	1,290 lbs
BTT81242S	81"	242"	5,660 lbs	7,000 lbs	3,500# Torsion	2	ST205-75-R14-C	1,340 lbs
BTT81267S	81"	267"	5,660 lbs	7,000 lbs	3,500# Torsion	2	ST205-75-R14-C	1,400 lbs
BTT81168SL	81"	168"	5,750 lbs	7,000 lbs	3,500# Torsion	2	ST205-75-R14-C	1,250 lbs
BTT81192SL	81"	192"	5,680 lbs	7,000 lbs	3,500# Torsion	2	ST205-75-R14-C	1,320 lbs
BTT81216SL	81"	216"	5,620 lbs	7,000 lbs	3,500# Torsion	2	ST205-75-R14-C	1,380 lbs
BTT81240SL	81"	240"	5,550 lbs	7,000 lbs	3,500# Torsion	2	ST205-75-R14-C	1,450 lbs

\*GVWR and Carrying Capacity listed without electric brakes

## TILT UTILITY TRAILERS

Model	Bed Width	Bed Length	Carrying Capacity	GVWR	Axle	No. of Axles	Tire Size	Trailer Weight
BTU65120T	65"	120"	1,780 lbs	2,200 lbs	2,200# Torsion	1	175-80-R13-C	420 lbs
BTU81128T	81"	128"	2,340 lbs*	2,990 lbs**	3,500# Torsion	1	ST205-75-R14-C	650 lbs
BTU81152T	81"	152"	2,290 lbs*	2,990 lbs**	3,500# Torsion	1	ST205-75-R14-C	700 lbs
BTU81176T	81"	176"	2,240 lbs*	2,990 lbs**	3,500# Torsion	1	ST205-75-R14-C	750 lbs
BTU79152T	79"	152"	4,115 lbs	5,000 lbs	5,200# Torsion	1	ST225-75-R15-D	885 lbs
BTU79176T	79"	176"	4,050 lbs	5,000 lbs	5,200# Torsion	1	ST225-75-R15-D	950 lbs

\*Carrying capacity = 2,750 lbs with optional brakes

\*\*GVWR without electric brakes

## ENCLOSED TRAILERS

Model	Overall Size	Carrying Capacity	GVWR	Axle	No. of Axles	Tire Size	Trailer Weight
BTE612S	209.5" x 94.75" x 107.19"	1,660 lbs	2,990 lbs	3,500# Torsion	1	ST205-75-R14-C	1,330 lbs
BTE7516T	265.94" x 102" x 109.44"	4,900 lbs	7,000 lbs	3,500# Torsion	2	ST205-75-R15-C	2,100 lbs

## ATV/UTV TRAILERS

Model	Bed Width	Bed Length	Carrying Capacity	GVWR	Axle	No. of Axles	Tire Size	Trailer Weight
BTX82120S	82"	120"	2,330 lbs	2,810 lbs	3,000# Torsion	1	20.5X8X10-E	480 lbs
BTX82144S	82"	144"	2,330 lbs	2,855 lbs	3,000# Torsion	1	20.5X8X10-E	525 lbs
BTX82168S	82"	168"	2,330 lbs	2,990 lbs	3,000# Torsion	1	ST175-80-R13-C	660 lbs



## MOTORCYCLE TRAILERS

Model	Bed Width	Bed Length	Carrying Capacity	GVWR	Axle	No. of Axles	Tire Size	Trailer Weight
BTM53120S	53"	120"	1,800 lbs	2,175 lbs	2,200# Torsion	1	ST175-80-R13-C	375 lbs
BTM65120S	65"	120"	1,765 lbs	2,175 lbs	2,200# Torsion	1	ST175-80-R13-C	410 lbs
BTM76132S	76"	132"	2,100 lbs	2,550 lbs	3,000# Torsion	1	ST175-80-R13-C	450 lbs

## SNOWMOBILE TRAILERS


Model	Bed Width	Overall Width	Bed Length	Carrying Capacity	GVWR	Axle Type	# of Axles	Brake Option	Tire Size	Trailer Weight	Tongue Jack	Ramp
BTS99120T	99.25"	101.5"	120"	1,380 Lbs.	1,870 lbs	2,200# Torsion	1	N/A	18.5 x 8.5 x 8-C	490#	Opt.	N/A
BTS99144S	99.25"	101.5"	144"	1,580 Lbs.	2,200 lbs	2,200# Torsion	1	N/A	20.5 x 8 x 10-C	620#	Opt.	Std.
BTS99192S	99.25"	101.5"	192"	1,990 Lbs.	2,991 lbs	2,200# Torsion	2	2	ST175-80-R13-C	1,000#	Std.	Std.
BTS99240S	99.25"	101.5"	240"	3,200 Lbs.	4,400 lbs	2,200# Torsion	2	2	ST175-80-R13-C	1,200#	Std.	Std.
BTS99264S	99.25"	101.5"	264"	3,100 Lbs.	4,400 lbs	2,200# Torsion	2	2	ST175-80-R13-C	1,300#	Std.	Std.


## CAR HAULERS

Model	Bed Width	Bed Length	Capacity	GVWR	Axle	No. of Axles	Tire Size	Trailer Weight
BTC81216HD	81"	216"	5,650 lbs	7,000 lbs	3,500# Torsion	2	ST205-75-R14-C	1,350 lbs
BTC81192B	81"	192"	5,650 lbs	7,000 lbs	3,500# Torsion	2	ST205-75-R14-C	1,350 lbs
BTC81216B	81"	216"	5,600 lbs	7,000 lbs	3,500# Torsion	2	ST205-75-R14-C	1,400 lbs
BTC81240B HD	81"	240"	8,115 lbs	9,990 lbs	5,200# Torsion	2	ST225-75-R15-D	1,875 lbs

## TILT CAR HAULERS

Model	Bed Width	Bed Length	Capacity	GVWR	Axle	No. of Axles	Tire Size	Trailer Weight
BTC81218T	81"	218"	5,500 lbs	7,000 lbs	3,500# Torsion	2	ST205-75-R14-C	1,500 lbs
BTC81242T	81"	242"	5,450 lbs	7,000 lbs	3,500# Torsion	2	ST205-75-R14-C	1,550 lbs
BTC81242T HD	81"	242"	8,050 lbs	9,990 lbs	5,200# Torsion	2	ST225-75-R15-D	1,940 lbs



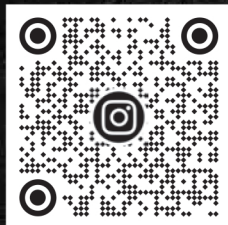


**BUILT TOUGH FOR YOUR  
NEXT ADVENTURE!**

# CONNECT WITH US!



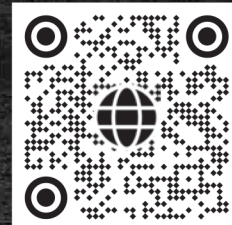
FACEBOOK



INSTAGRAM



YOUTUBE



WEBSITE

**Bear Track Trailers**  
803 Central Ave N  
Brandon, MN 56315

1-800-417-0504  
[info@beartrackproducts.com](mailto:info@beartrackproducts.com)  
[www.BearTrackTrailers.com](http://www.BearTrackTrailers.com)

