



About Us

Founded in the year 2000, Bear Track Products is a family owned business located in Evansville, Minnesota. We manufacture a complete line of high quality aluminum trailers, including small to heavy duty utility trailers; motorcycle and ATV trailers; and two, three and four-place snowmobile trailers. We also manufacture a large variety of aluminum loading ramps for ATVs, snowmobiles, motorcycles and garden tractors.

All of our trailers and ramps are covered by a 5-year structural warranty.

Bear Track's trailers and loading ramps are sold through a network of knowledgeable and friendly dealers throughout the United States and Canada. Each of our dealers has the highest customer satisfaction in mind. Please contact us to find the dealer nearest your location.

Our goal at Bear Track is to provide our customers with the best quality products and services at the best possible price.

Why Aluminum?

- **Better Fuel Economy** - Lightweight aluminum trailers pull easier.
- **Lower Maintenance** - Dirt and salt do not affect aluminum like steel.
- **Durable** - There's no paint to scratch, fade or peel.
- **Easy to Handle** - Many of our lightweight utility trailers can be moved by hand.
- **Better Resale** - Aluminum simply will not rust. Your trailer looks better longer.

Why BEAR TRACK?



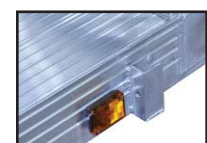
Arched Bi-fold End Gate

- Low profile creates less drag
- Arched design gives the ramp strength
- Lightweight, easy to unfold



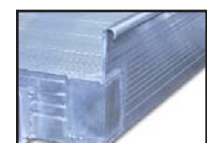
AL-KO's rubber torsion axles are standard on all Bear Track trailers.

- Lasts longer than traditional spring axles
- Patented hexagonal shape allows for greater swing arm travel and better ride
- No shock transfer from wheel to wheel



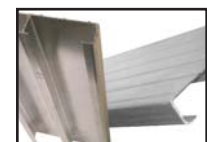
Welded Stake Pockets

- Every trailer comes standard with a minimum of 4 stake pockets (2 per side)
- Side kits bolt on easily so that one person can install them.



Curled Front Rail

- Provides additional tie down options (works great to compress ATV front suspensions)
- Helps deflect some debris from your load



Bear Track uses extruded aluminum

- Decking won't warp, splinter, or crack
- Custom extrusions have specific contours added to give strength and rigidity.
- Precision welds throughout

5-YEAR WARRANTY



Utility Trailers

ATV's • Golf Carts • Garden Tractors • Motorcycles

Bear Track Models and Specifications: Utility Trailers

| Model | Bed Length | Bed Width | Carrying Capacity | Axle | # of Axles | Tire Size | Trailer Wt. |
|------------|------------|-----------|-------------------|---------------|------------|----------------|-------------|
| BTU4978 | 6.5' | 49" | 1200 lbs | 1800# Torsion | 1 | 480X12-B | 275 lbs |
| BTU5396 | 8' | 53" | 1800 lbs | 2200# Torsion | 1 | ST175-80-R13-C | 300 lbs |
| BTU53120 | 10' | 53" | 1800 lbs | 2200# Torsion | 1 | ST175-80-R13-C | 365 lbs |
| BTU6595 | 8' | 65" | 1800 lbs | 2200# Torsion | 1 | ST175-80-R13-C | 325 lbs |
| BTU65120 | 10' | 65" | 1800 lbs | 2200# Torsion | 1 | ST175-80-R13-C | 390 lbs |
| BTU65144 | 12' | 65" | 1775 lbs | 2200# Torsion | 1 | ST175-80-R13-C | 425 lbs |
| BTU65168-S | 14' | 65" | 1680 lbs | 2200# Torsion | 1 | ST175-80-R13-C | 520 lbs |
| BTU76120 | 10' | 76" | 1775 lbs | 2200# Torsion | 1 | ST175-80-R13-C | 415 lbs |
| BTU76144 | 12' | 76" | 1750 lbs | 2200# Torsion | 1 | ST175-80-R13-C | 440 lbs |
| BTU82120 | 10' | 82" | 1775 lbs | 2200# Torsion | 1 | ST175-80-R13-C | 425 lbs |
| BTU82144 | 12' | 82" | 1750 lbs | 2200# Torsion | 1 | ST175-80-R13-C | 450 lbs |

Bear Track Models and Specifications: Heavy Duty Utility Trailers

| Model | Bed Length | Bed Width | Carrying Capacity | Axle | # of Axles | Tire Size | Trailer Wt. |
|------------|------------|-----------|-------------------|---------------|------------|----------------|-------------|
| BTU65168-H | 14' | 65" | 2330 lbs* | 2200# Torsion | 2 | ST175-80-R13-C | 660 lbs |
| BTU65192-H | 16' | 65" | 2290 lbs* | 2200# Torsion | 2 | ST175-80-R13-C | 700 lbs |
| BTU80144-H | 12' | 80" | 2320 lbs* | 3500# Torsion | 1 | ST205-75-R14-C | 670 lbs |
| BTU80168-S | 14' | 80" | 2270 lbs | 3500# Torsion | 1 | ST205-75-R14-C | 720 lbs |
| BTU80168-H | 14' | 80" | 2131 lbs* | 2200# Torsion | 2 | ST175-80-R13-C | 860 lbs |
| BTU80192-H | 16' | 80" | 2080 lbs* | 2200# Torsion | 2 | ST175-80-R13-C | 910 lbs |
| BTU80216 | 18' | 80" | 2030 lbs* | 2200# Torsion | 2 | ST205-75-R14-C | 960 lbs |
| BTU80240 | 20' | 80" | 1980 lbs* | 2200# Torsion | 2 | ST205-75-R14-C | 1010 lbs |

* Weight capacity 2800 lbs with optional brakes

Bear Track Models and Specifications: ATV Trailers

| Model | Bed Length | Bed Width | Carrying Capacity | Axle | # of Axles | Tire Size | Trailer Wt. |
|-----------|------------|-----------|-------------------|---------------|------------|-------------|-------------|
| BTU82102 | 8.5' | 82" | 1800 lbs | 2200# Torsion | 1 | 20.5X8X10-C | 400 lbs |
| BTU8210AT | 10' | 82" | 2330 lbs | 3000# Torsion | 1 | 20.5X8X10-E | 480 lbs |
| BTU8212AT | 12' | 82" | 2330 lbs | 3000# Torsion | 1 | 20.5X8X10-E | 525 lbs |
| BTU8214AS | 14' | 82" | 2330 lbs | 3000# Torsion | 1 | 20.5X8X10-E | 660 lbs |
| BTU8214AT | 14' | 82" | 2240 lbs | 2200# Torsion | 2 | 20.5X8X10-C | 750 lbs |
| BTU82192 | 16' | 82" | 2100 lbs | 2200# Torsion | 2 | 20.5X8X10-C | 890 lbs |

Bear Track Models and Specifications: Motorcycle Trailers

| Model | Bed Length | Bed Width | Carrying Capacity | Axle | # of Axles | Tire Size | Trailer Wt. |
|----------|------------|-----------|-------------------|---------------|------------|----------------|-------------|
| BTM53120 | 10' | 53" | 1800 lbs | 2200# Torsion | 1 | ST175-80-R13-C | 375 lbs |
| BTM76132 | 11' | 76" | 2100 lbs | 3000# Torsion | 1 | ST175-80-R13-C | 450 lbs |

Bear Track Models and Specifications: Car Hauler

| Model | Bed Length | Bed Width | Carrying Capacity | Axle | # of Axles | Tire Size | Trailer Wt. |
|----------|------------|-----------|-------------------|---------------|------------|----------------|-------------|
| BT14CH | 14' | 81" | 5000 lbs | 3500# Torsion | 2 | ST205-80-R14-C | 1345 lbs. |
| BT16CH | 16' | 81" | 5000 lbs | 3500# Torsion | 2 | ST205-80-R14-C | 1440 lbs. |
| BT18CH | 18' | 81" | 5000 lbs | 3500# Torsion | 2 | ST205-80-R14-C | 1525 lbs. |
| BTHD16CH | 16' | 81" | 6500 lbs | 4400# Torsion | 2 | ST205-80-R14-C | 1520 lbs. |
| BTHD18CH | 18' | 81" | 6500 lbs | 4400# Torsion | 2 | ST205-80-R14-C | 1630 lbs. |

All trailers above have an optional side rail kit available except Car Hauler.

All trailers covered by Bear Track's 5-Year Warranty



P.O. Box 39 • 627 County Road 82 NW
Evansville, MN 56326

1-800-417-0504

www.beartrackproducts.com



MADE IN USA



ALUMINUM TRAILERS

ATV's • Golf Carts • Garden Tractors • Motorcycles



www.beartrackproducts.com



Utility Trailers

5-YEAR WARRANTY

ATV's • Golf Carts • Garden Tractors • Motorcycles

Utility Trailers

Bear Track utility trailers have a 2200# torsion axle with Ultralube® bearing system (no transfer of road shock from one wheel to the other), and include 2" ball mount coupler with safety chains.

All Bear Track trailers carry a 5-year structural warranty and a 5-year torsion axle warranty.

Models BTU5396, BTU53120, BTU6596, BTU65120, BTU65144, BTU76120, BTU76144, BTU82120, BTU82144



Model BTU6596 (left) shown with optional side kit, aluminum wheels & tongue jack

All Bear Track Utility Models feature:

- All aluminum construction for a virtually maintenance free trailer
- Extruded 6" deep side rail with ribs provides maximum strength and stability to the entire frame
- Full width, bi-fold arched end gate ramp minimizes wind resistance. Unfolded ramp length is 42"
- Curled front rail and tie-down rods in all four corners offer many ways to tie down loads
- 13" load range C tires on white modular steel wheels. Aluminum wheels are optional
- Three inch formed aluminum tongue with wishbone design
- Welded side stake pockets

*Bi-fold end gate capacity is 1500 lbs, H.D. model: 2500 lbs capacity



Light Duty Utility Trailer

Shown with optional side rail kit

Model BTU4978

- Lighter duty version of our other trailers
- 1200 lb load capacity
- 1800 lb torsion axle
- Durable plastic fenders
- Optional side kit available

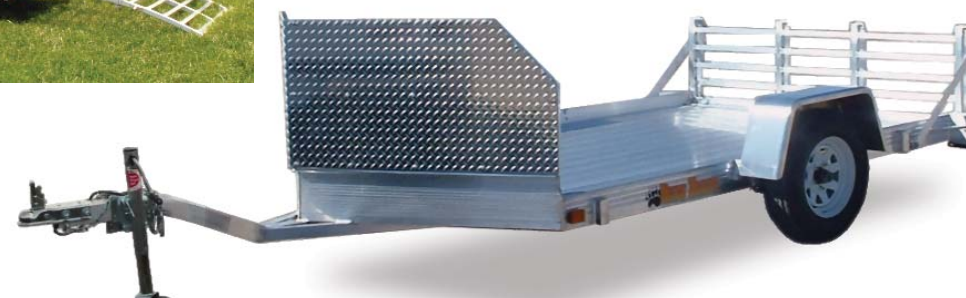


Your bike travels in style and safety with a Bear Track motorcycle trailer.

Model BTU53120 (above)
Shown with optional aluminum wheels, rock guard, tongue jack, & wheel chock

Motorcycle Trailers

- Easy to handle bi-fold loading ramp end gate
- Torsion axle with Ultralube®
- V-front design for cycles
- 8' of useable space (9' for BTU76132) before the start of the V-front allows the trailer to be used for other cargo, like an ATV or golf cart



Model BTU76132 (above)
Shown with optional rock guard & tongue jack

ATV Trailers

Models BTU82102, BTU8210AT, BTU8212AT, BTU8214AS, BTU8214AT, BTU82192

- 82" deck width is ideal for ATV's
- 2200# torsion axle with Ultralube®
- 10" load range C and E tires
- Ramps mounted for travel in front of trailer
- Ramps can be used for loading either from the side or the rear



Shown with optional 13" aluminum wheels

Heavy Duty Utility

Models BTU65168-H, BTU65192-H, BTU80144-H, BTU80168-S, BTU80168-H, BTU80192-H, BTU80216, BTU80240

- Single Axle: 3500# torsion axle with Ultralube® & 14" load range C tires
- Tandem Axles: Two - 2200 torsion axles with Ultralube® & 13" load range C tires
- Includes tongue jack
- Trailer has a 2800# load capacity (when equipped w/brakes)
- Also available with bi-fold end gate
- Optional side kit is available

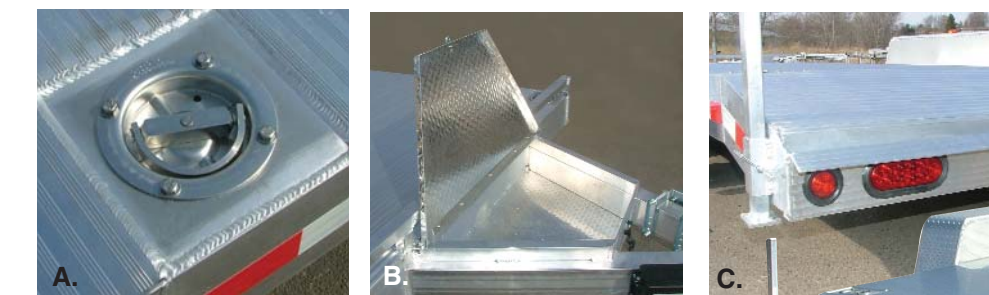


All heavy duty trailers available with bi-fold, heavy duty bi-fold or 54" straight ramp

Car Hauler



Models BT14CH, BT16CH, BT18CH, BTHD16CH, BTHD18CH
(shown with optional 2 ft. beavertail, front storage box and aluminum wheels)



Options

- A.** Recessed Tie-down Ring Optional
- B.** Front Storage Box
- C.** Beaver Tail & LED Tail Lights

ALL SPECIFICATIONS ON BACK

Strong & Dependable

Car Hauler Features:

- All aluminum construction creates a virtually maintenance free trailer
- Extruded 6.5" deep side rail with ribs provide maximum strength and stability
- Removable fenders
- 14" white steel wheels standard
- Ramps stow easily under the side of the trailer
- Stainless steel "D" ring tie downs to secure your load. (Recessed "D" rings are available)
- Demco EZ-LATCH coupler makes hooking up your trailer fast, easy and worry free



Bear Track Trailers have a 5-year structural warranty 5-year torsion axle warranty